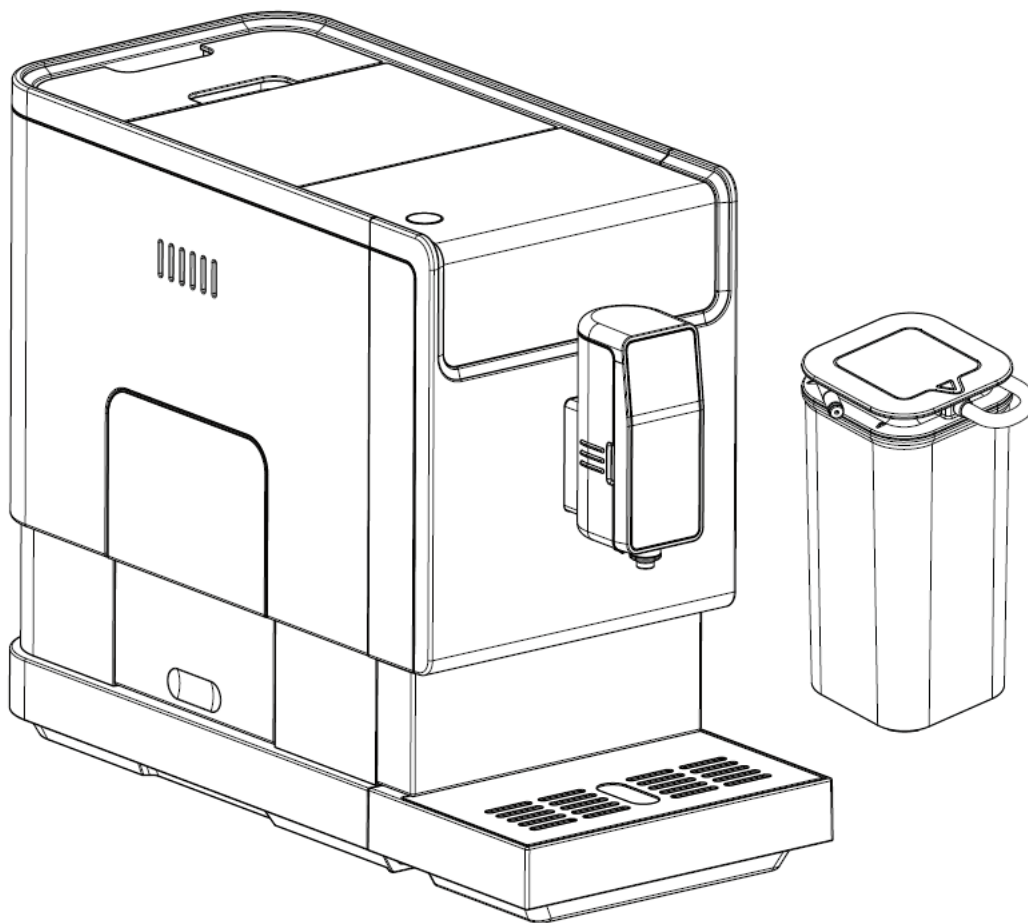


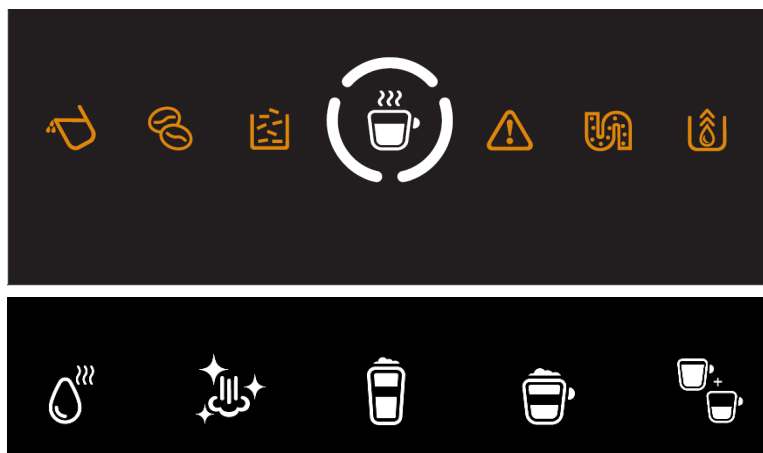
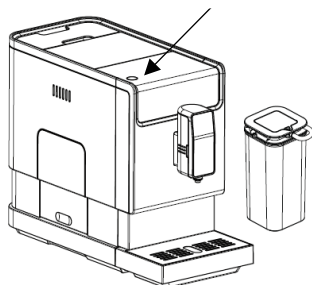
 **Bellucci**
Slim Latte
Automatic Coffee Machine















**Cleaning procedure of the
Automatic milk frothing system**

II. CONTROL PANEL& ON/OFF BUTTON

Power ON/OFF Button

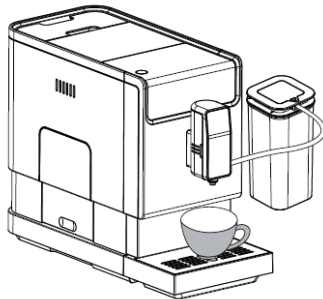



	Flashing: Low water level/ Water tank missing
	Lack of bean
	Lights up stably: coffee grounds container is full Flashing: Internal Drip Tray/coffee grounds container is missing
	Lights up stably: Brewer is missing/ installed improperly Flashing: Service door is opened / installed improperly
	Lights up stably: Requires to do descaling Flashing: Descaling is under process
	Empty System Function is running
	Power ON/OFF Button
	Espresso and Coffee Button (double-press for second coffee selection)
	Cappuccino Button
	Latte Macchiato Button
	Cleaning Button / Hot froth milk button (press twice)
	Hot water Button

Quick cleaning procedure of the automatic milk frothing system.

This procedure does not replace a complete cleaning of the automatic milk frothing system.

1. Place a cup or a container under the spout.



2. Rinse the milk container and fill it with fresh water and close the lid.
3. Connect the tube from the milk frothing system to the machine.
4. Press the cleaning button  twice. The button indicator lights up during preparation.
5. For thorough cleaning, see chapter "Daily cleaning of the appliance" in the section


Deep cleaning of the automatic milk frothing system.

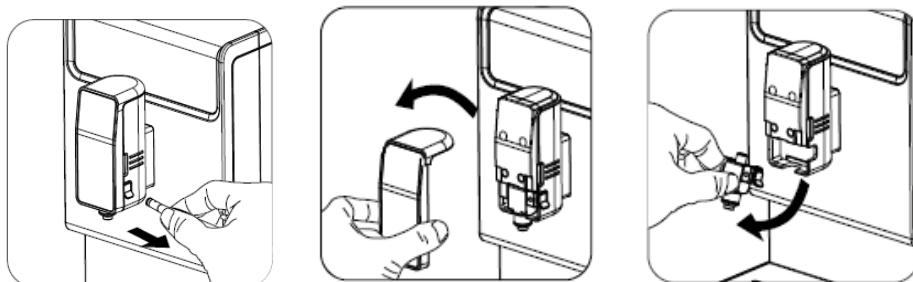
Warning:

- *An automatic milk system cleaner such as Rinza can be used to improve cleaning efficiency.*
- *If you use an automatic milk system cleaner like the Rinza, remember to perform an additional rinse afterwards with fresh water as indicated in steps 2-3-4.*
- *Steam and hot water may spray out from the nozzle when cleaning starts.*

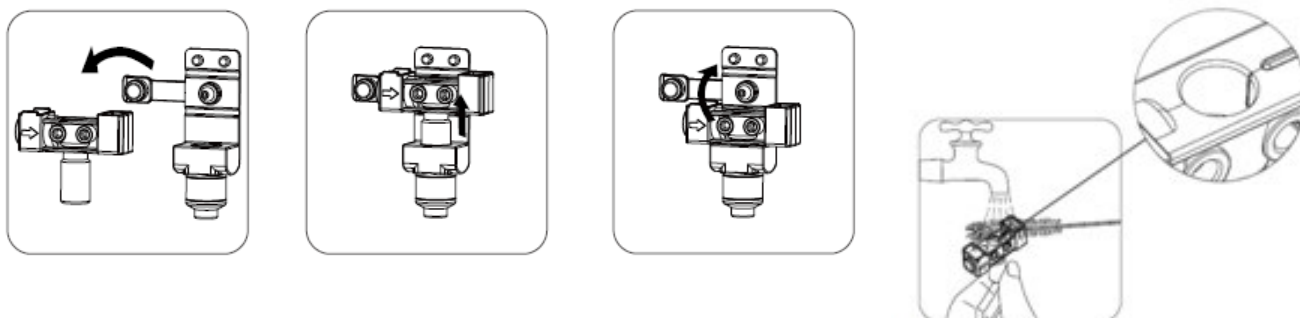
Deep Cleaning procedure of the automatic milk froth system

Note: it is important to do these steps daily to make sure the function of the automatic milk frother running in good condition

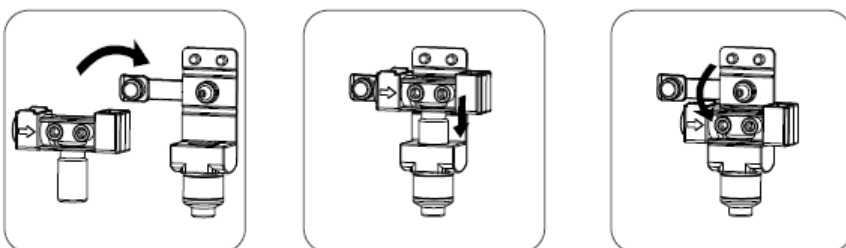
1. Carry out the quick cleaning with the automatic milk frothing system cleaner as described on page 3
2. Press the cleaning button. 
3. Disassemble the milk frother using the following procedure. Clean it with cool water. Then insert the milk frother into the slot. (see step below)



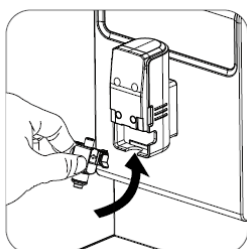
Step 1: take out the spout cover and then take out the milk frother



Step 2: Take apart the milk frother into two parts and clean with fresh water
You can use bristle of brush to clean the above circle area to ensure no residual



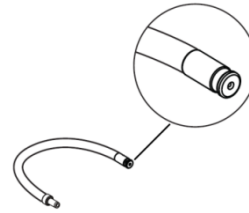
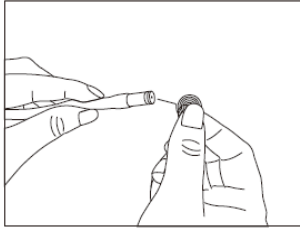
Step 3: Assemble the milk frother back to original position





Cleaning the milk container and connection milk tube

Note: it is important to do this step daily to make sure the function of automatic milk frother running in good condition.

1. Empty the milk inside the milk container and wash it with fresh water, take out the connection rubber and container milk tube to wash it with fresh water too, then assemble them to the lid again (make sure the connection is fit and correct)
2. Clean the both end of milk connection milk tube with fresh water, to make sure the hole on the milk tube connector is clean(see picture),you can use needle or bristle of brush to clean the hole.



3. Fill the milk container with fresh water and connect to the machine with container milk tube
4. Using Frothing milk function by pressing the Cleaning button  , the water in milk container can clean the connection tube internal. You can stop the cleaning by press the Cleaning button  again.